



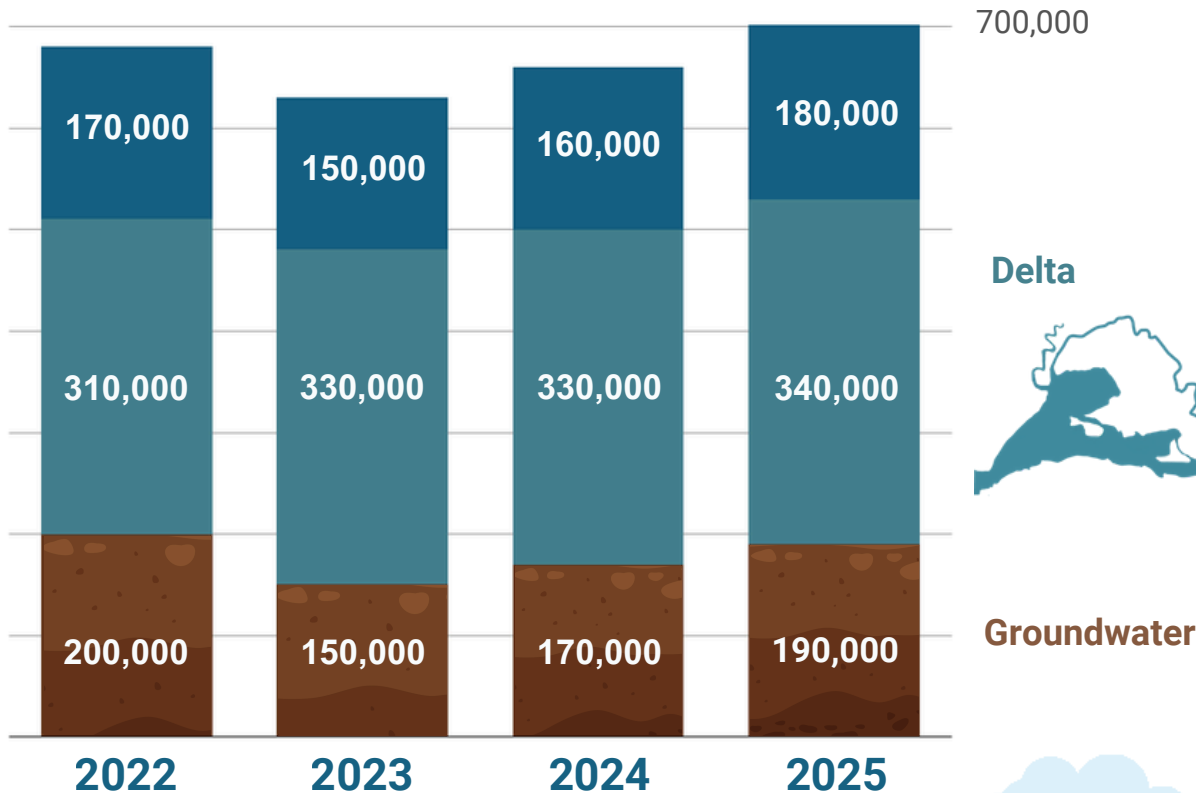
# THE STATE OF THE SOLANO SUBBASIN WATER YEAR 2025\*

A snapshot of surface water and groundwater conditions in the Solano Subbasin.

\*2025 Water Year refers to October 2024 through September 2025

Water Use in Acre Feet per Water Year

Lake Berryessa



Delta



Groundwater

Groundwater accounts for about 1/3 of water use in the subbasin. While precipitation was similar to the previous year, higher temperatures this year and over time influence water demand.

## WORKING TOWARD A SUSTAINABLE WATER FUTURE



### Expanded Monitoring

Continue seasonal monitoring, install seven new continuous water-level monitoring devices, and strengthen the monitoring network, including a new well near Putah Creek.



### Implementation Funding and Outreach

Support Sustainable Groundwater Management Act activities through coordination with local landowners, Resource Conservation Districts, and adjacent subbasins.



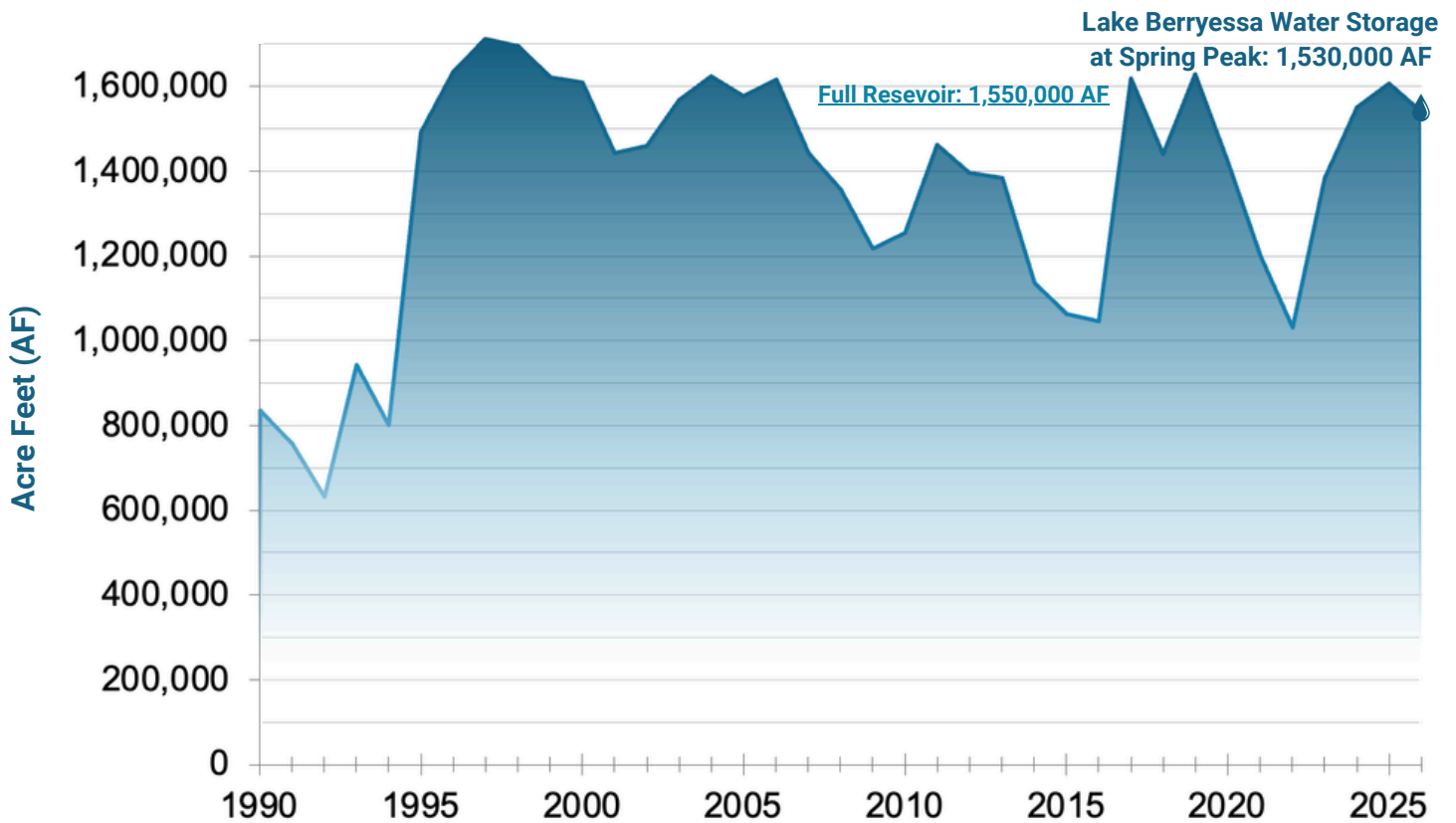
### Multi-Benefit Project Planning

Advance three pilot recharge efforts to test how drainage infrastructure and natural landscape features can capture stormwater, recharge groundwater, & improve resiliency.

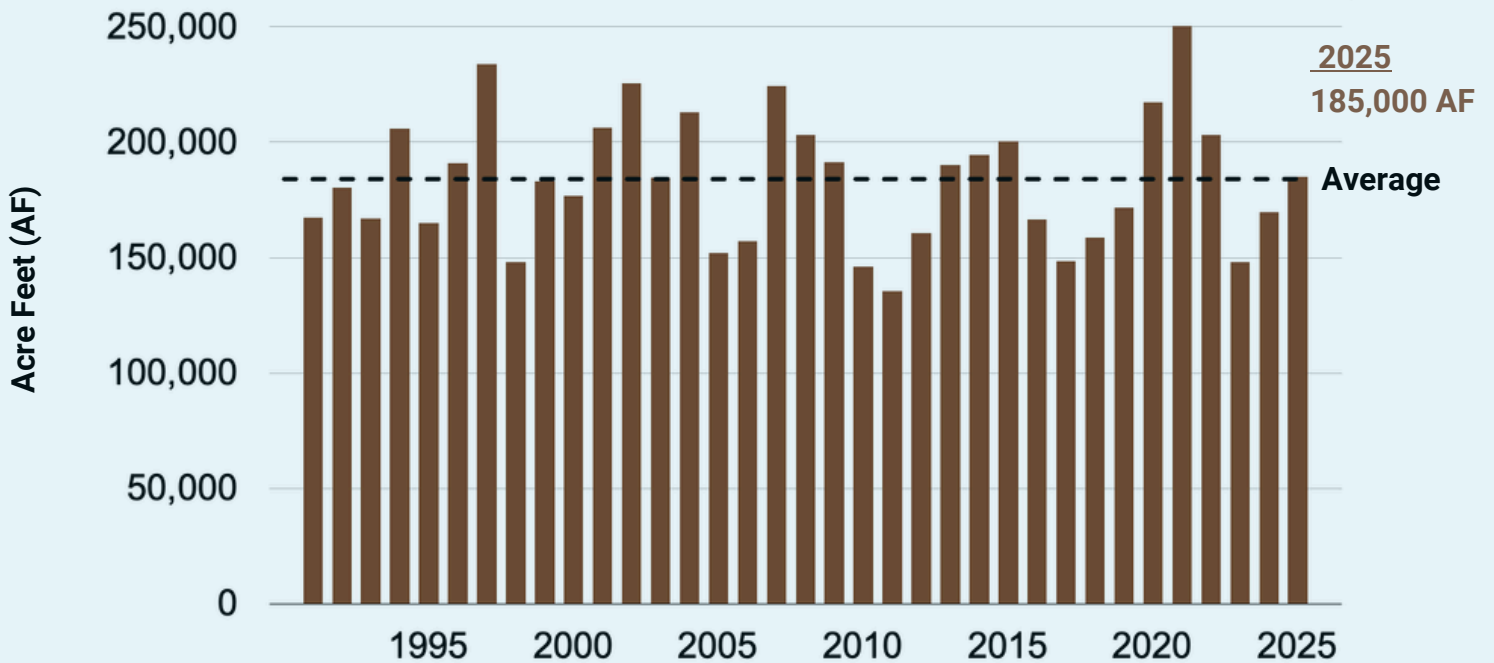
For more information, access the [2025 Annual Report](#) or visit [SolanoGSP.com](http://SolanoGSP.com)

Para más información visite [www.solanogsp.com/espanol/](http://www.solanogsp.com/espanol/)

## TRENDS IN WATER STORAGE



## GROUNDWATER PUMPING



We need to continue to recharge and increase groundwater storage in key areas to sustain water supplies during future dry periods.

For more information, access the [2025 Annual Report](#) or visit [SolanoGSP.com](http://SolanoGSP.com)

Para más información visite [www.solanogsp.com/espanol/](http://www.solanogsp.com/espanol/)